



# El Dorado County Emergency Services Authority

---

---

## JPA Systems Status Management Committee Meeting

Wednesday, April 24, 2013 – 9:00 a.m.

DS/ED Fire Station #49, Classroom Room, 501 Main Street, Diamond Springs, CA

### AGENDA

1. Approval of Agenda Teter
  2. Review/Approve SSMC Meeting Minutes from March 27, 2013 Teter
  3. Training Update Ransdell
    - 3.1 Target Solutions
    - 3.2 EPCR Training Course
  4. Old Business Teter
    - 4.1 Upcoming Special Events (standing item)
    - 4.2 Update on Interfacility Skilled Nursing EMD Card 33
    - 4.3 Response Time Report/Medic Move-up Statistics
    - 4.4 Status/Recommendation for ambulance AVICN# 128-1483 (old M26) Schwab
  5. New Business Teter
    - 5.1 Review FY 11/12 ALS/BLS & IFT Stats Cordero
    - 5.2 M-26 Reduction cost benefit analysis
  6. Committee Reports Schwab
    - 6.1 EPCR Working Group
    - 6.2 MAC Committee
    - 6.3 Ambulance Spec Committee Update
    - 6.4 Equipment and Supply Update
    - 6.5 Technology Update
  7. Adjournment Teter
- Next Meeting ~ May 29, 2013 (Team Building 5/22/13)**

\*\*\* Please park at the Fireman's Hall or the JPA parking lot as the Commercial Businesses need their parking available for customers ~ Thank you \*\*\*



## El Dorado County Emergency Services Authority

---

### JPA Systems Status Management Committee Meeting

Wednesday, March 27, 2013 – 9:00 a.m.

DS/ED Fire Station #49, Classroom Room, 501 Main Street, Diamond Springs, CA

### MINUTES

Chief Dekker-Garden Valley, Chief Schwab-Georgetown, Chief Keating-Rescue, Chief O’Camb-El Dorado Hills, Executive Director Hackett-EDC JPA, Chief Ransdell-Diamond Springs, Chief Teter-Cameron Park, and Chief Hardy-El Dorado Hills present.

**Meeting called to order at 0902.**

**Pledge of Allegiance led by Teter**

#### **1. Approval of Agenda**

Motion by Schwab to approve agenda adding New Business Item 5.7-Breaking out move up and cover stats and moving Item 4.4 after Item 2. Second by Hardy. Motion carried.

#### **2. Review/Approve SSMC Meeting Minutes from February 27, 2013**

Motion by Keating to approve SSMC minutes from February 27, 2013. Second by O’Camb. Motion carried.

#### **3. Training Update**

- Management 2C class will be held at Diamond Springs May 6-10.
- Strike Team Leader refresher will be held May 9 and May 10.
- TOs will be holding a regional RT130 training May 13-19

3.1 Target Solutions – No report

3.2 EPCR Training Course

- There is now a draft training course in place. Thanks to Susan Johnston at Georgetown who assembled the PowerPoint training presentation.
- Whitman’s suggestions should be submitted today or tomorrow.
- TOs and paramedic FTOs will be doing training with Forte and then bringing that training to our firefighter-paramedics for improved EPCR documentation.

#### **4. Old Business**

4.1 Upcoming Special Events (standing item)

- June 29 will be the annual Cameron Park Spectacular at Cameron Park Lake.
- The first and second weekends of September will see a one day barbeque competition called Rub Stock and a two day Renaissance Faire at Cameron Park Lake. Both are expected to have over 5,000 attendees each day.

4.2 Update Interfacility Skilled Nursing EMD Card 33

- No report. Needs to be revisited. Keep as a standing agenda item.

4.3 Response Time Report/Medic Move-up Statistics

- In compliance.
- Urban response time is close to standard.

4.4 Review System Status Management Policy, part 2

- Reviewed all changes.
- Discussed move-ups and assignments changes.
- Discussed procedure for call-backs.

Motion by Hardy to implement revised call-back procedure for a three month trial period with a report back to this committee at the June meeting. Second by Schwab. Motion carried.

Motion by Schwab to amend Section IV, Item C to status medic units in CADWEB. Current Item C will be changed to Item D. Also add definition of CADWEB in Section III. Second by Hardy. Motion carried.

Motion by Hardy to send policy as amended to full board after final “clean-up” review by SSMC members. Second by Schwab. Motion carried.

- Special thanks to Captain Carmel Mitchell and ECC staff for all their work on this policy.

## **5. New Business**

### 5.1 Review FY 11/12 ALS/BLS & IFT Stats

- Reviewed stats – for information only.
- Discussed CCT costs and Medicare and MediCal reimbursement rates.
- Contract with Marshall for CCT. Need to evaluate cost/payment.
- Will ask Finance Committee to look into CCT contract with Marshall.

### 5.2 MDC Program Status

- Medic units will not continue to participate in the program. Anticipate this will save \$17,000/year.
- Working with Diamond Springs to get map books for units.

### 5.3 RescueNet Sign-up

- Zoll monitors had software updated.
- RescueNet signup was available.
- Cell phone issue with M89 has been resolved.

### 5.4 M-26 Reduction cost benefit analysis

- No report yet but is estimating a \$200,000 savings for FY 12-13.

### 5.5 EMS Recognition Week - Nominations

- Nominations need to be received by the JPA by April 4, 2013 in order to get on the BOS agenda for May 21, 2013.

### 5.6 Discuss cancellation or rescheduling of May 22<sup>nd</sup> meeting due to Team Building Exercise

Motion by Dekker to reschedule May 22 meeting to May 29, 0900. Second by Hardy. Motion carried.

- O’Camb will chair as Teter will be out of town.

### 5.7 Breaking out Move-up and Cover Stats

- Reviewed M25 and M28 calls. Would like a better definition of “public assist/other”.
- Crystal reports does not have the capability to report move-ups in pie chart format.
- Will request that Chief Sanders report back on cost associated with the creation of this is new report.

## **6. Committee Reports**

### 6.1 EPCR Working Group

- 20 Cameron Park tags had cross-pollination for a specific activity. Forte has been informed.
- All provider agencies are advised to check all January and February reports to check for errors and have them corrected.
- EMS would like the name of one supervisor for each unit so they can be kept in the loop for corrections.

### 6.2 MAC Committee

- Policies will be coming through for approval.
- EMS trauma plans went to state.
- Ambulance ordinance went into effect yesterday.
- Marshall questioned wait times for PCR to be delivered to hospital. They were given a copy of the JPA policy.
- Working on new PCR form.

### 6.3 Ambulance Spec Committee Update – No report

### 6.4 Equipment and Supply Update

- Discussed at last meeting that a central store would save a significant amount of money due to less instances of waste.
- Costs for implementing and sustaining a central store could outweigh savings.
- Could set up a system for tracking expiration dates to use close to expiring items before they are out of date.

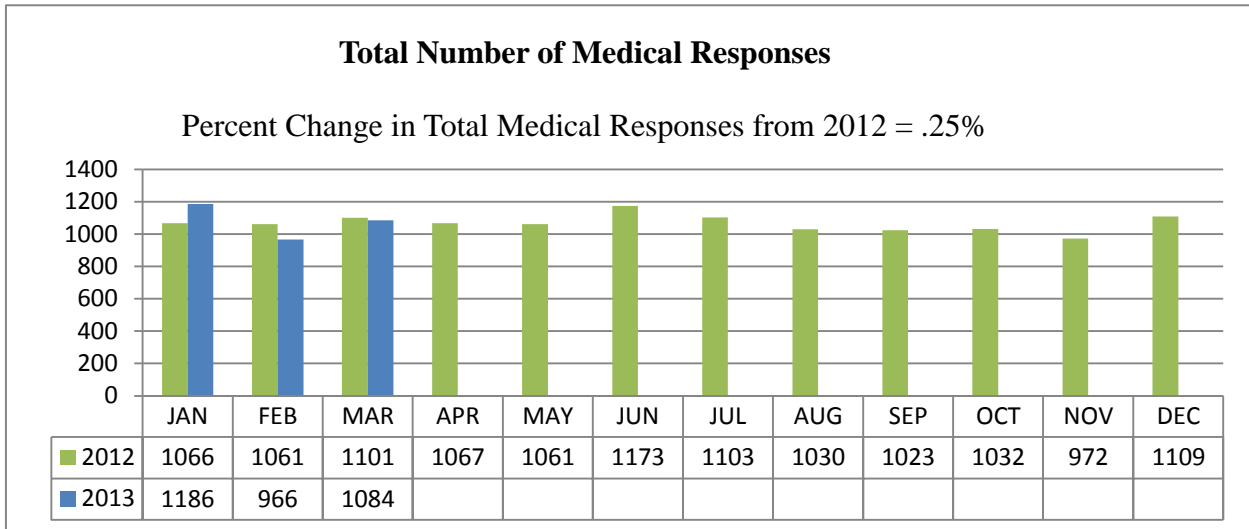
### 6.5 Technology Update - No Report

## **7. Adjournment**

Motion by O’Camb to adjourn at 1105. Second by Schwab. Motion carried.

# Incident Summary Report for MARCH

Total Number of Responses to Date (2013)                      4887  
 Total Number of Medical Responses to Date (2013)        3236

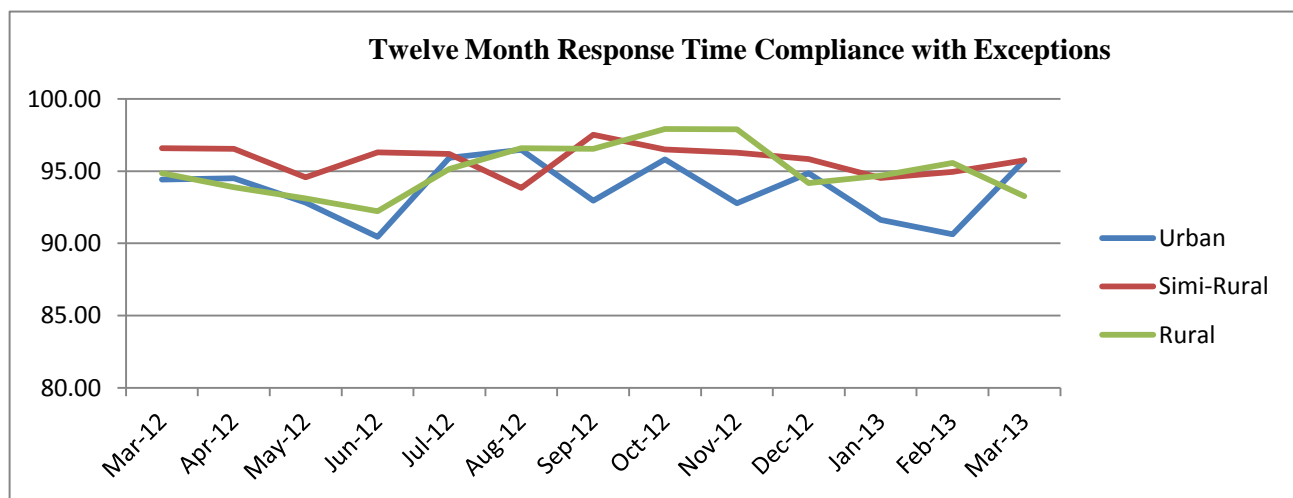


### Response Times

	Before Exception Waivers	With Waivers
Urban	95.28%	95.75%
Semi-Rural	94.03%	95.74%
Rural	86.54%	93.27%
Wilderness	100.00%	100.00%

### Exception Reports by Response Times

	Generated	Submitted to EMSA	Waiver
Urban	10	1	1
Semi-Rural	21	8	6
Rural	14	7	7
Wilderness	0	0	0



## Incident Summary Report for MARCH

### Exception Reports

Total Number of Exception Reports 45

#### Response Area

North	
72 Cool	5
74 Coloma	3
63 Volcanoville	2
51 Garden Valley	1
61 Georgetown	1
73 Pilot Hill	1

Core	
75 Mosquito	5
25 Placerville	2
44 Logtown	2
46 El Dorado	1
49 Diamond	1

East	
17 Pollock	4
21 Camino	1
18 Sierra Springs	1

West	
85 EDH	5
86 EDH	4
88 Cameron Park	2
83 Rescue	1

South	
37 Omo Ranch	1

#### Reason for Exception Report

Urban	
GSA to GSA	5
Distance	4
Weather	1

Semi-Rural	
Distance	5
GSA to GSA	5
Incorrect Time Stamp	4
Dispatched C-2	2
Gate	1
No visible address	1
Reduced to C-2	1
Radio Problem	1

Rural	
Distance	11
GSA to GSA	3

**Time Period: March 2013**

1. A list of the Response Areas we went to and how often?
  - a. Which medic units were dispatched to these response areas?

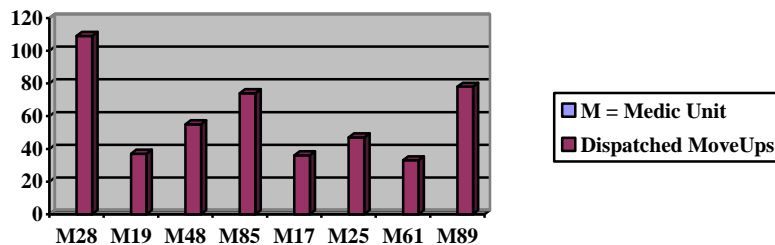
**See JPA report – Medic Unit by Jurisdiction**

3. How many move-ups were dispatched (separate this number from actual medic calls and other calls for service)?

**469 - OACA (Move-up and Cover)**

4. By medic unit how many times were they dispatched on a move up?

**M28 (109) M19 (37) M48 (55) M85 (74)  
M17 (36) M25 (47) M61 (33) M89 (78)**



- a. Where were they posted?

**M28 (mostly 25/74) M19 (mostly 25) M48 (17/21/89/19) M89 (25/74)  
M17 (21/25) M25 (17/19/21/89) M61 (25) M85 (89)**

5. By medic unit the number of medical calls they responded to and in comparison to other medic units (Perhaps a graph or pie chart)?

**See Percent by Medic Unit Pie Chart**

6. The number of times we had to call back and add an additional medic unit to the system for coverage? **3 times**

**Breakdown:**

**M37M – 4x**

(cover Station 89) 3/8/13 for 30 minutes

(cover Station 89) 3/14/13 for 10 minutes

(cover Station 89) 3/16/13 for 40 minutes & 1 medical call (Total=1hr.15 min)

7. When a medic unit is added to the system, what was taking place at the time? Were there just a lot of sick calls, an MCI, lots of wrecks, severe weather, an unusual large number of IFTs, IFTs going to SF or Stanford?

**Mostly 911, there was a drop in transfers for month of March.  
Only 96 transfer (MEDT) calls**

8. How many hours was the call-back medic unit needed for coverage?

**Under 3 hours total.**

9. How many IFT runs in total, how many IFTs were in-county and how many IFTs were out-of-county for a destination?

**Total: 96 In Town=52 Out of town =43 SF=1**

10. By medic unit how many IFTs did they handle and in comparison to other medic units?

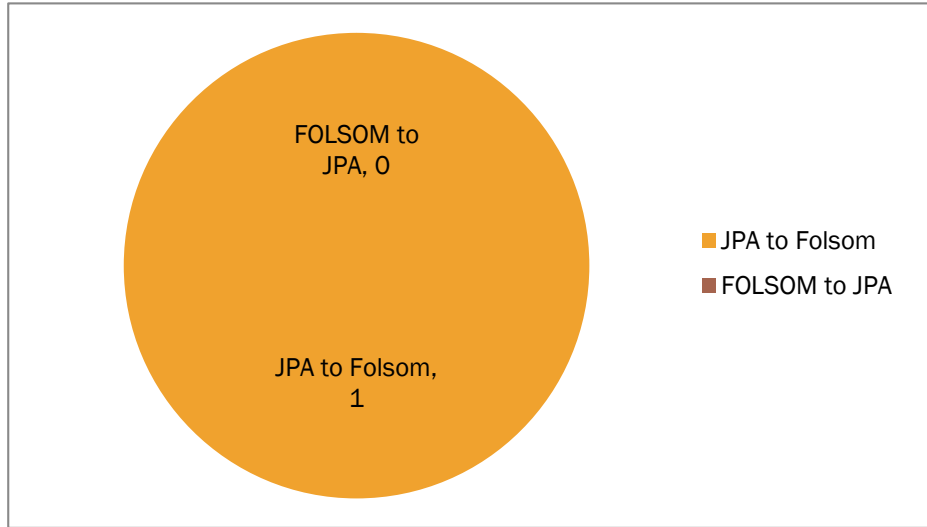
**There were only 96 confirmed transfers for the month of March. Each medic below was dispatched to the call, however, on 9 occasions a different medic took the call for another medic.**

**M17 (5) M25 (24) M28 (20) M85 (3)  
M19 (13) M48 (20) M89 (16) M61 (4)**

**MOVE-UPS**

**March 2013**

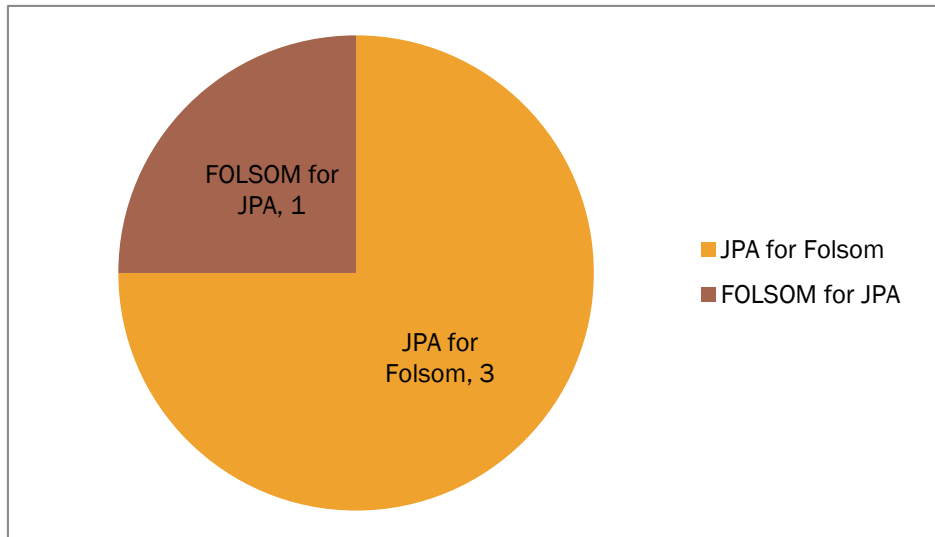
<b>JPA to Folsom</b>	<b>1</b>
<b>FOLSOM to JPA</b>	<b>0</b>



**MEDICAL CALLS**

**March 2013**

<b>JPA for Folsom</b>	<b>3</b>
<b>FOLSOM for JPA</b>	<b>1</b>





*Emergency Response Summary - Medic Units by Category - El Dorado*

*Reporting Period: 3/1/2013 to 3/31/2013*

All Incidents

## Percent by Medic Unit

